

New State Hospital Buildings to Give Patients Modern Accommodations

One Fully Ready To Be Open for Inspection Friday

Patients at South Carolina's State Hospital will soon be afforded some of the most modern hospital accommodations in the country when four new buildings, recently completed, are opened to patients.

Two of the four one-story buildings are already completely equipped inside with new furniture and medical facilities for 152 patients each, while the remaining two are still to be furnished inside.

Major work left for the new additions to the hospital's expansion

OPEN HOUSE FRIDAY

One of the buildings now completely equipped will be open for inspection by the public from 2 o'clock Friday afternoon until 8 o'clock that night. Persons wishing to inspect the building have been asked to use either the Calhoun street entrance to the grounds or the Colonial entrance. The entrance to the building will be plainly marked.

Program includes grading and landscaping the grounds surrounding the buildings. The buildings when completely furnished will have cost the state

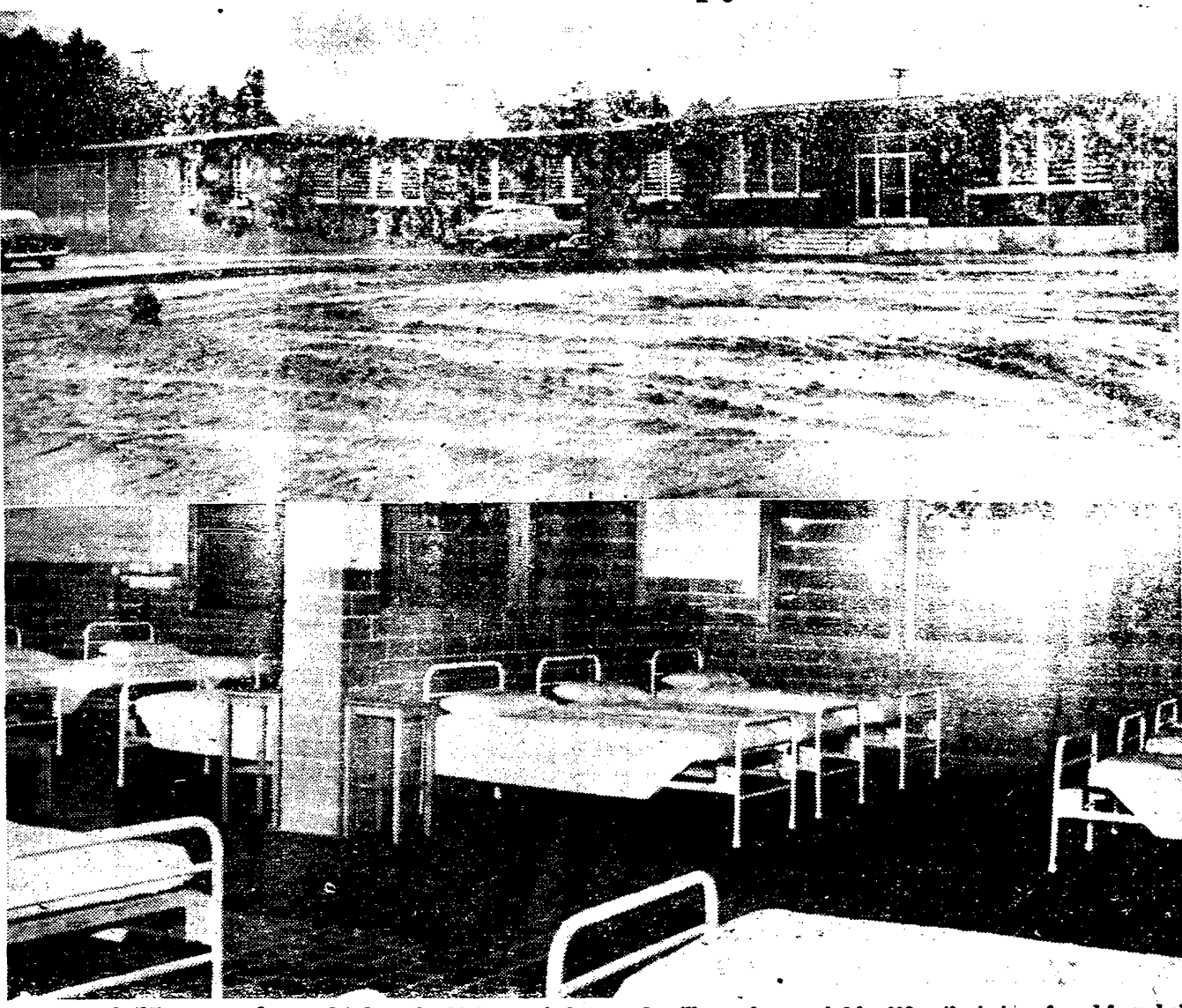
FALSE TEETH That Loosen Need Not Embarrass

Many wearers of false teeth have suffered real embarrassment because their real teeth dropped, slipped or wobbled at just the wrong time. Do not live in fear of this happening to you. Just sprinkle a little **FASTEETH**, the alkaline (non-acid) powder, on your plates. Hold false teeth more firmly, so they feel more comfortable. Does not sour. Checks "plate odor" (denture breath). Get **FASTEETH** at any drug counter.

KIDNEYS MUST REMOVE EXCESS WASTE

Nagging backache, loss of pep and energy, headaches and dizziness may be due to slow-down of kidney function. Doctors say good kidney function is very important to good health. When some everyday condition, such as stress and strain, causes this important function to slow down, many folks suffer nagging backache—feel miserable. Minor bladder irritations due to cold or wrong diet may cause getting up nights or frequent passages. Don't neglect your kidneys if these conditions bother you. Try Doan's Pills—a mild diuretic. Used successfully by millions for over 50 years. It's amazing how many times Doan's give happy relief from these discomforts—help the 15 miles of kidney tubes and filter flush out waste. Get Doan's Pills today!

Mental Patients Soon to Occupy New Dormitories



Four new buildings recently completed on the State Hospital grounds will soon be occupied by 608 patients transferred from buildings either to be torn down or completely renovated. An outside view of one of the \$717,000 buildings is shown in the upper photo. A portion of the fenced-in recreation yard can be seen at the extreme left of the picture, an addition which will enable patients to be put out in the open with a minimum of attendants. In the lower picture a view of the four dormitories included in each building is shown. Some privacy is afforded the patients of the dormitories by the low partition separating each group of beds, while the nurse's view of the patients is not completely restricted. In addition to the four dormitories in each building there are many one-patient rooms. The buildings will be open Friday for public inspection. (Munn-Teal photos.)

approximately \$717,000 apiece. Each of the buildings has 152 beds both in private rooms and in two dormitory spaces for a total of 608 new beds. Occupation of the new buildings will not relieve over-crowding which hospital officials say has plagued the institution for so long. One old building condemned in the past as "unfit for patient use" will be torn down, and two more will be vacated and completely renovated, a hospital official said. There are now 5,750 patients at the hospital. The new buildings are to be occupied by "mentally disturbed" patients, and are so constructed that a minimum of nurses and attendants are necessary to care for the patients. Two of the buildings are for female patients and the other two for men. Each of the four buildings is divided into four completely separate "nursing units" which will operate much like a floor in a multiple-story hospital. The nurse from her centrally-located office, is afforded a clear view of all patients in her unit, both in the 30- and 18-bed dormitory rooms as well as the numerous private one-patient rooms for exceptionally disturbed persons. A visitor entering the main entrance to one of the buildings first lead into a lobby with visiting rooms on either side. Both of the visiting rooms are divided into three cubicles to allow the patient and his visitor a measure of privacy. The floors throughout the buildings are of red tile, with gray glazed tile walls. The high ceilings are of acoustical tile of a blending color. In the center of the four separate nursing units are spacious cafeteria facilities, recreation rooms, a beauty or barber shop and offices for doctors, a secretary and facilities for employees. Radiant heat emanating from the hospital's recently enlarged central heating plant is used for the new buildings, with an estimated 26 1/2 miles of pipe being used under the floors of the four buildings to carry the heat. Mirrors, a forbidden item in some institutions of this type, will be of unbreakable glass as are most of the windows between sections of the buildings. Glass, about one inch thick, is used. For the hot days of summer each of the nursing units of each building is equipped with a 36-inch ceiling exhaust fan while two will cool the kitchen and dining halls. One of the interesting features of the buildings is circulating ice water which will be available to patients at the numerous fountains. The nurse-in-charge can control the lights in her section of the building from a centrally located switch panel. Also from her vantage point can see into the next nursing unit by means of large unbreakable windows in the walls and through the wire mesh that surrounds her section. Each of the private rooms in the building is equipped with a heavy wire door while a heavy cut- and tear-proof screen covers the louvre-type windows which can be opened or closed only by a nurse or attendant. One of the novel construction ideas incorporated in each of the buildings is a fenced-in recreation yard outside of each which will allow the patients a maximum of fresh air with a minimum of attendants. Each of the yards is enclosed with a 13-foot fence which has been labeled by several agile University of South Carolina students who were asked to try to climb it as "climb-proof." Each nursing section has a day room for the patients' use which will have radio, television, magazines, game equipment and in cases where warranted pool tables and other equipment. A central sound system for the entire hospital is now being installed, but as yet is not ready for use. While food for the patients will be prepared in the hospital's central kitchen, each of the four new buildings has a spacious cafeteria which will seat all patients in the building at one sitting. Four-person brightly-colored tables with aluminum chairs are used in the cafeteria, which is completely equipped with stainless steel kitchen equipment. Food will be brought to the serving line from the central kitchen in mobile food carts which have facilities for keeping the food hot. Cups, saucers and drinking glasses used in the cafeteria are of unbreakable plastic while the patients will eat from individual stainless steel trays similar to the ones used by the armed forces. Each of the kitchens is equipped with an automatic tray and dish-washing machine, an ice-making machine, toaster and other kitchen equipment. A walk-in refrigerator will be used in each kitchen for storing garbage to control insects and eliminate odors until the wastes can be collected. In the center of each building there is a cement outdoor patio where unusually disturbed patients may go outside and not disturb the other patients in the other outdoor recreation yards. Also located near the center of

REA Approves Loan for Lower SC Telephone Cooperative

each building is a barber shop in the men's buildings and a beauty shop in the two for women. Modern equipment, including facilities for washing hair and electric dryers for proper drying are available in the beauty shops, while the barbershops will have complete hair-cutting equipment. An occupational therapy room and a central recreation room will also be available for the patients of each building for the programs conducted by the hospital's professional occupational therapist and the recreational director. Two buildings identical to these are now in the process of construction at the hospital's Negro unit at State Park. The buildings were designed by Lafaye, Fair, Lafaye Associates, architects, and were constructed by the Daniel Construction Company of Greenville. A new kitchen-bakery-cafeteria, located near the new buildings, is being constructed at the end of the existing warehouse building that was erected a few years ago. The deepfreeze unit adjacent to the new kitchen is to be large enough to hold a railroad carload of frozen food.

Means New Dial Systems in at Least 12 Towns

WASHINGTON, Jan. 27.—The Rural Electrification Administration approved a loan for a lower South Carolina telephone cooperative yesterday which will mean new dial telephone systems in at least 12 South Carolina communities. It was one of the larger REA approvals of late and will have a widespread effect on telephone service in South Carolina. The REA approved a loan of \$1,329,000 to the Farmers Telephone Cooperative of Kingstree. President of that coop is W. B. Davis. The latest loan, and an earlier one, will mean service for some 3,900 new customers, though yesterday's loan mainly affects Lee and Sumter Counties. New dial systems will probably be set up in the following places as a result of the loan: Lanex, Scranton, Greeleyville, Lynchburg, Summerton, Andrews, Sumter, Manning and in or near Kingstree (serving rural areas). Senators Maybank and Johnston and Representatives Riley and McMillan made the announcement yesterday. Americans spend about 300 million dollars a year on eye care says the Better Vision Institute.

English literature, science survey courses, human growth and development, Bible, health education functional grammar, economics and family. Credit will be given for residence and graduation requirements. For further information write Dean A. D. Greene, Allen University, Columbia South Carolina or Phoebe 78.3.

Teachers desirous of attending the week-end extension at Allen University may register for the following courses now in progress: English literature, science survey courses, human growth and development, Bible, health education functional grammar, economics and family. Credit will be given for residence and graduation requirements. For further information write Dean A. D. Greene, Allen University, Columbia South Carolina or Phoebe 78.3.

English literature, science survey courses, human growth and development, Bible, health education functional grammar, economics and family. Credit will be given for residence and graduation requirements. For further information write Dean A. D. Greene, Allen University, Columbia South Carolina or Phoebe 78.3.

Allen University Lists Week-End Extension

Teachers desirous of attending the week-end extension at Allen University may register for the following courses now in progress: English literature, science survey courses, human growth and development, Bible, health education functional grammar, economics and family. Credit will be given for residence and graduation requirements. For further information write Dean A. D. Greene, Allen University, Columbia South Carolina or Phoebe 78.3.

Town Alert After Ransom Demand of \$100

NEW FAIRFIELD, Conn., Jan. 27.—This little community of 1,300 is on a vigilant alert today over a \$100 ransom demand. School kids, making like posers, are taking the long way home. The mailman, the milkman, the eggman and the policeman are alerted. They're all looking for a possible dognapper and for Lady Puggsy, the Ralph L. Baggs' 5-month-old Boxer puppy who disappeared five days ago. Baggs offered a reward, and before you could say "Lady Puggsy" a man called up to demand \$100 for her return. Baggs is ready to pay, but he hasn't heard from the man since. Meanwhile, State Police started investigating. A nearby radio station broadcast the story. School officials took note of Lady Puggsy's plight on the elementary school bulletin board. That was all the youngsters needed. A whale when first born may sometimes exceed a third the length of the mother.

They're all looking for a possible dognapper and for Lady Puggsy, the Ralph L. Baggs' 5-month-old Boxer puppy who disappeared five days ago. Baggs offered a reward, and before you could say "Lady Puggsy" a man called up to demand \$100 for her return. Baggs is ready to pay, but he hasn't heard from the man since. Meanwhile, State Police started investigating. A nearby radio station broadcast the story. School officials took note of Lady Puggsy's plight on the elementary school bulletin board. That was all the youngsters needed. A whale when first born may sometimes exceed a third the length of the mother.

They're all looking for a possible dognapper and for Lady Puggsy, the Ralph L. Baggs' 5-month-old Boxer puppy who disappeared five days ago. Baggs offered a reward, and before you could say "Lady Puggsy" a man called up to demand \$100 for her return. Baggs is ready to pay, but he hasn't heard from the man since. Meanwhile, State Police started investigating. A nearby radio station broadcast the story. School officials took note of Lady Puggsy's plight on the elementary school bulletin board. That was all the youngsters needed. A whale when first born may sometimes exceed a third the length of the mother.

They're all looking for a possible dognapper and for Lady Puggsy, the Ralph L. Baggs' 5-month-old Boxer puppy who disappeared five days ago. Baggs offered a reward, and before you could say "Lady Puggsy" a man called up to demand \$100 for her return. Baggs is ready to pay, but he hasn't heard from the man since. Meanwhile, State Police started investigating. A nearby radio station broadcast the story. School officials took note of Lady Puggsy's plight on the elementary school bulletin board. That was all the youngsters needed. A whale when first born may sometimes exceed a third the length of the mother.

They're all looking for a possible dognapper and for Lady Puggsy, the Ralph L. Baggs' 5-month-old Boxer puppy who disappeared five days ago. Baggs offered a reward, and before you could say "Lady Puggsy" a man called up to demand \$100 for her return. Baggs is ready to pay, but he hasn't heard from the man since. Meanwhile, State Police started investigating. A nearby radio station broadcast the story. School officials took note of Lady Puggsy's plight on the elementary school bulletin board. That was all the youngsters needed. A whale when first born may sometimes exceed a third the length of the mother.

See . . . PRICE BROS. FOR WASHERS!

● BENDIX
● MAYTAG
● KELVINATOR
1441 Hampton Ph. 3-5732

use your convenient BERRY'S ON MAIN charge or layaway plans



BERRY'S on main our fabulous three-way wardrobe in Pure Silk "Silk-o-Nan"



A remarkably all purpose compact wardrobe in water spot resistant silk . . . it is a fabulous change-about costume composed of a sleek dress, a matching jacket plus an extra skirt . . . just in time for the social whirl. Navy, toast, black or Dior blue. Sizes 10 to 20, 14 1/2 to 22 1/2.

39.95

Carmelite's Scoop

in Navy or Black silk shantung with white kid trim. Sizes 4 to 10; AAAA to B.



Matching Silk Shantung handbag. **10.95** plus Fed. Tax

Shoe Salon, street floor

BOOKS CLOSED Charges Payable March 10th

Brown-Dantzler

Appliances • Television Proudly Presents

We promise you the clearest, steadiest TV picture possible!

NEW RCA VICTOR television

with Rotomatic Tuning



- MORE TO SEE**
- More picture detail—amazing depth and clarity.
 - Interference is screened out, power stepped up—automatically.
 - The picture is vivid, accurate over entire surface of the screen.
- LESS TO DO**
- Less dialing—it's automatic! Turn one knob—CLICK—there's your station!
 - Less adjusting—the exclusive "Magic Monitor" circuit system automatically brings in and holds the finest picture.

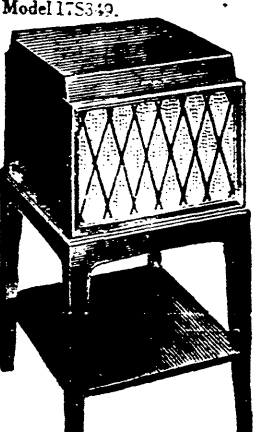
"Rotomatic Tuning" brings you two great RCA Victor exclusives: a powerful, accurate "Rotomatic" tuner plus the famous "Magic Monitor" circuit system. Come in . . . see it in action. See why every year, more people buy RCA Victor than any other television.

For the finest UHF reception—choose the "Rotomatic" UHF-VHF tuner or, on lower priced sets, the manual UHF tuner (both optional at extra cost).

\$219.95

Register Now! Win This High Fidelity "Victrola"

3-Speed Phonograph, Mahogany finish. Matching stand. Drawing Will Be Saturday, January 30, at 9 P.M. No Purchase Required You Needn't Be Present To Win



Brown-Dantzler

Appliances — Television

4435-37 Devine St. "Most Up-To-Date Service Department In Columbia" Phone 3-0283