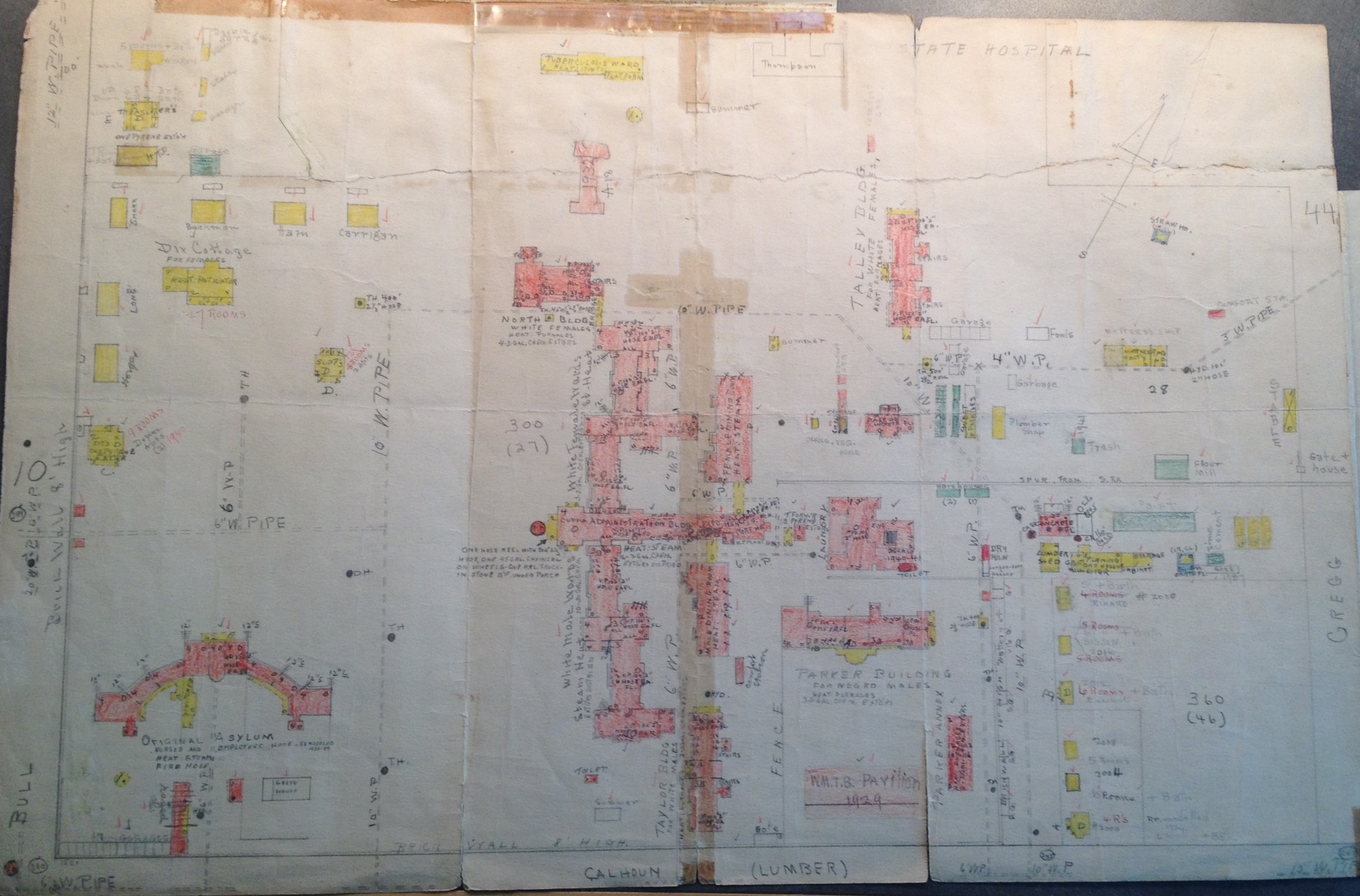


STATE HOSPITAL



44

300  
(27)

28

360  
(46)

GREGG

calhoun st

Hospitals  
at  
Calhoun

Bull Wall 8' High

BULL

FENCE

CALHOUN

(LUMBER)

6\"/>

10\"/>

6\"/>

12\"/>

6\"/>

10\"/>

6\"/>

6\"/>

6\"/>

6\"/>

6\"/>

6\"/>

6\"/>

6\"/>

6\"/>

6\"/>

6\"/>

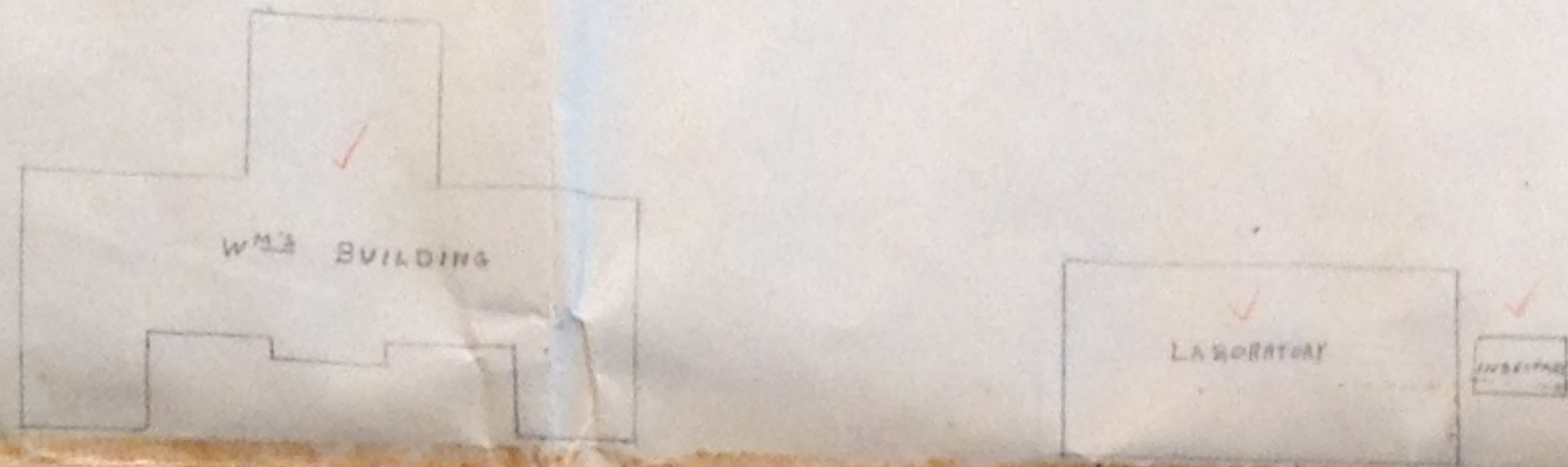
6\"/>

6\"/>

6\"/>

6\"/>

6\"/>



STATE HOSPITAL



BULL VALVE 8' High

10 W.P.

6 W.P.

44

300 (27)

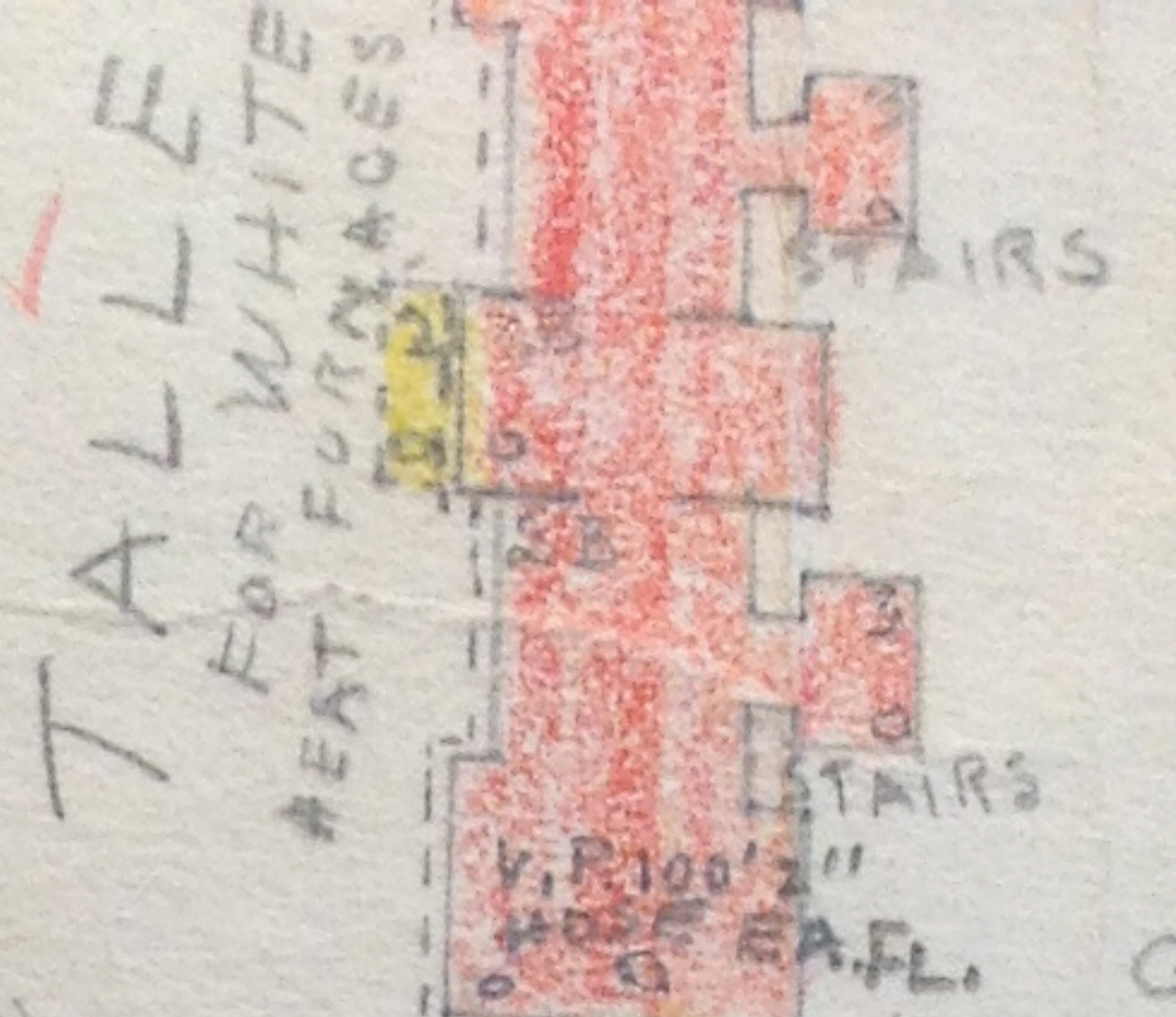
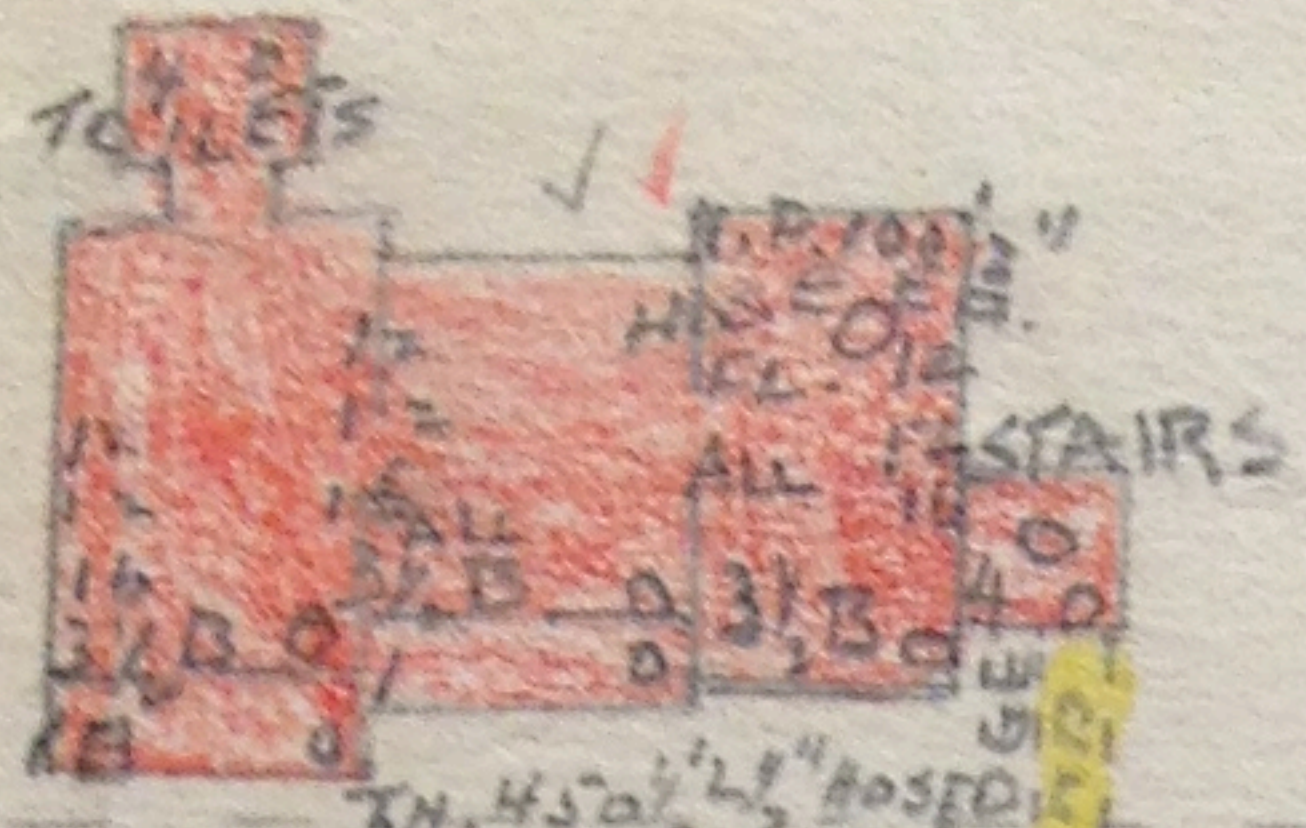
28

360 (46)

GREGG

Hospital at Calum

Calhoun St.



NORTH BLDG  
WHITE FEMALES  
HEAT: FURNACES  
4-3-GAL. CHEM. EXTGRS.

10" W.P. PIPE

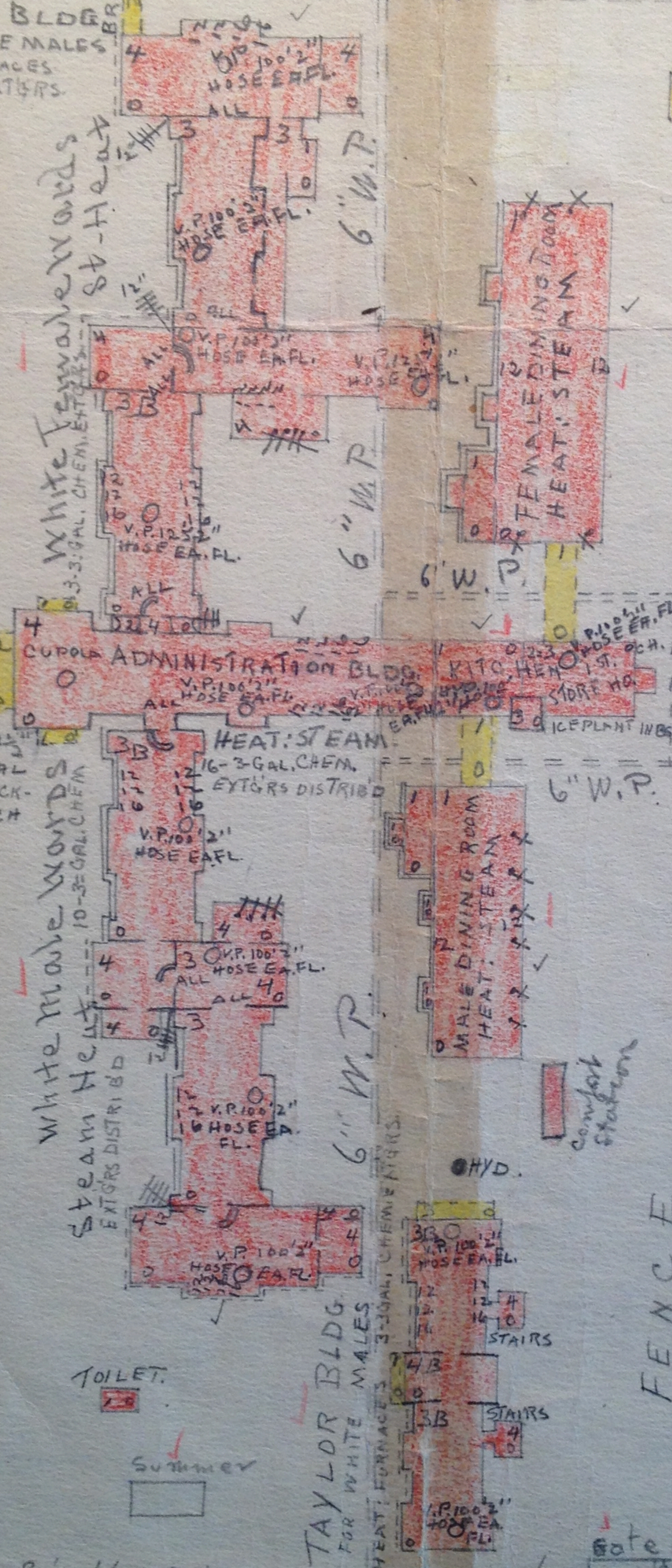
SUMMER

300  
(27)

White Female wards  
ST-H-HEAT

White Male wards  
ST-H-HEAT

ONE HOSE REEL WITH 500' 2 1/2" HOSE, ONE 45 GAL. CHEMICAL ON WHEELS-ONE H.L. TRUCK IN STONE B'ST. UNDER PORCH



OFFICE, VEG. HOUSE

LAUNDRY

PARKER BUILDING  
FOR NEGRO MALES  
HEAT: FURNACES  
3-3-GAL. CHEM. EXTGRS.

N.M.T.B. Pavilion  
1929

PARKER ANNEX

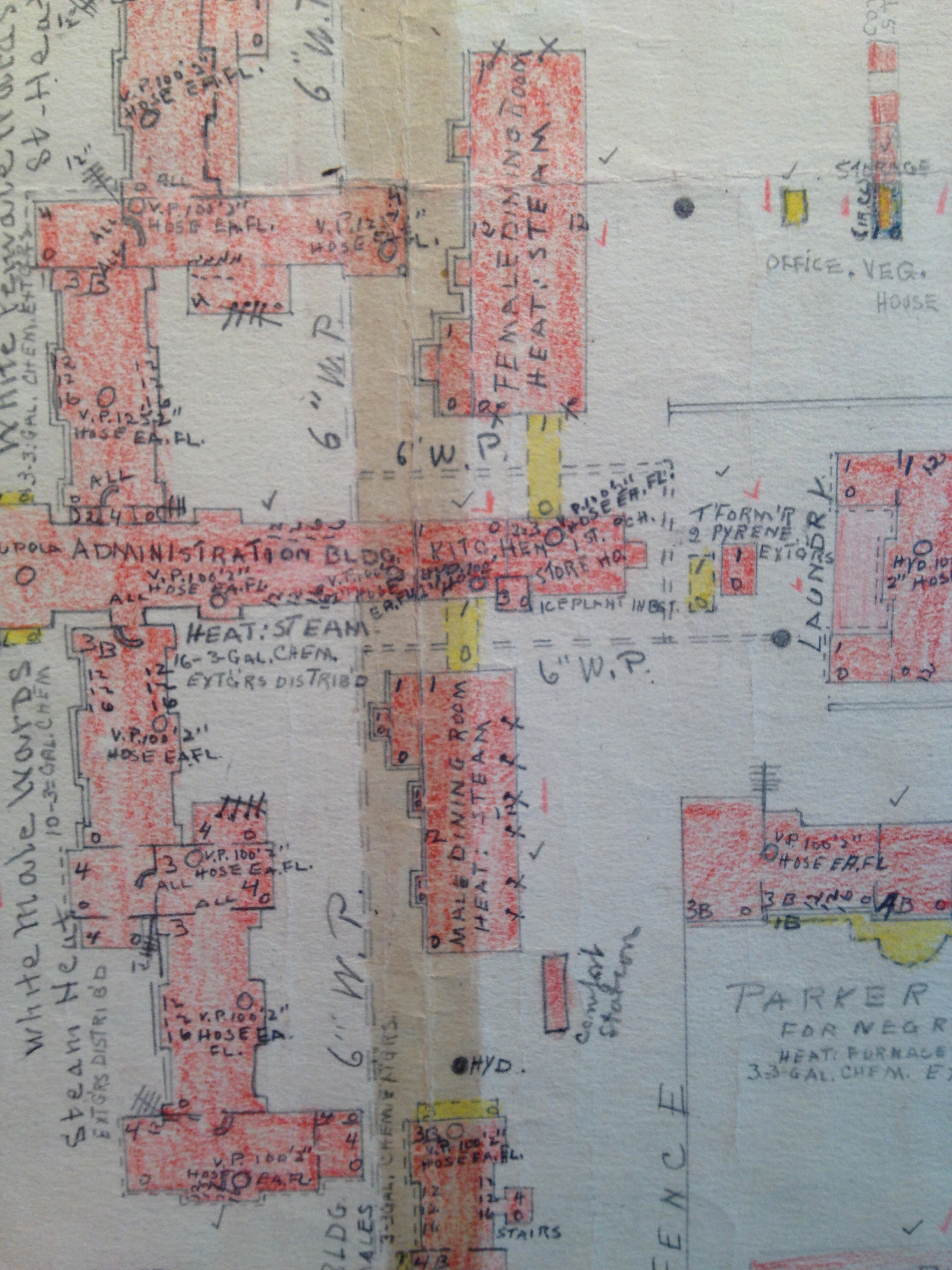
HEAT: FURNACES  
3-3-GAL. CHEM. EXTGRS.

PICK VYALL 8' HIGH.

CALHOUN

(LUMBER)

6" W.P.



WHITE MALE WORDS  
10-3-GAL. CHEM.  
ST-HEAD

STEAM HEAT  
EXTGRS DISTRIBD

BLDG. MALES

6" W.P.  
V.P. 100' 2" HOSE EA. FL.  
V.P. 12' 2" HOSE EA. FL.

ADMINISTRATION BLDG.  
V.P. 100' 2" HOSE EA. FL.  
HEAT: STEAM  
16-3-GAL. CHEM. EXTGRS DISTRIBD  
V.P. 100' 2" HOSE EA. FL.  
V.P. 100' 2" HOSE EA. FL.  
V.P. 100' 2" HOSE EA. FL.

6" W.P.  
DINING ROOM  
HEAT: STEAM

KITCHEN  
V.P. 100' 2" HOSE EA. FL.  
STORE HO.  
ICE PLANT INST.  
6" W.P.  
MALE DINING ROOM  
HEAT: STEAM

OFFICE, VEG. HOUSE  
STORAGE  
CIRCUIT

LAUNDRY  
T/FORMIP  
2 PYRENE  
EXTGRS  
HYD. 10' 2" HOSE  
V.P. 100' 2" HOSE EA. FL.  
PARKER FOR NEG R  
HEAT: FURNACE  
3-3-GAL. CHEM. E

STAIRS  
FENCE

Comfort Station

HYD.