

THE SIXTH ANNUAL REPORT

of the

South Carolina Mental Health  
Commission

Columbia, S. C.

For the Year Ending June 30, 1958



Printed Under the Direction of the  
State Budget and Control Board

Columbia, S. C., July 1, 1958

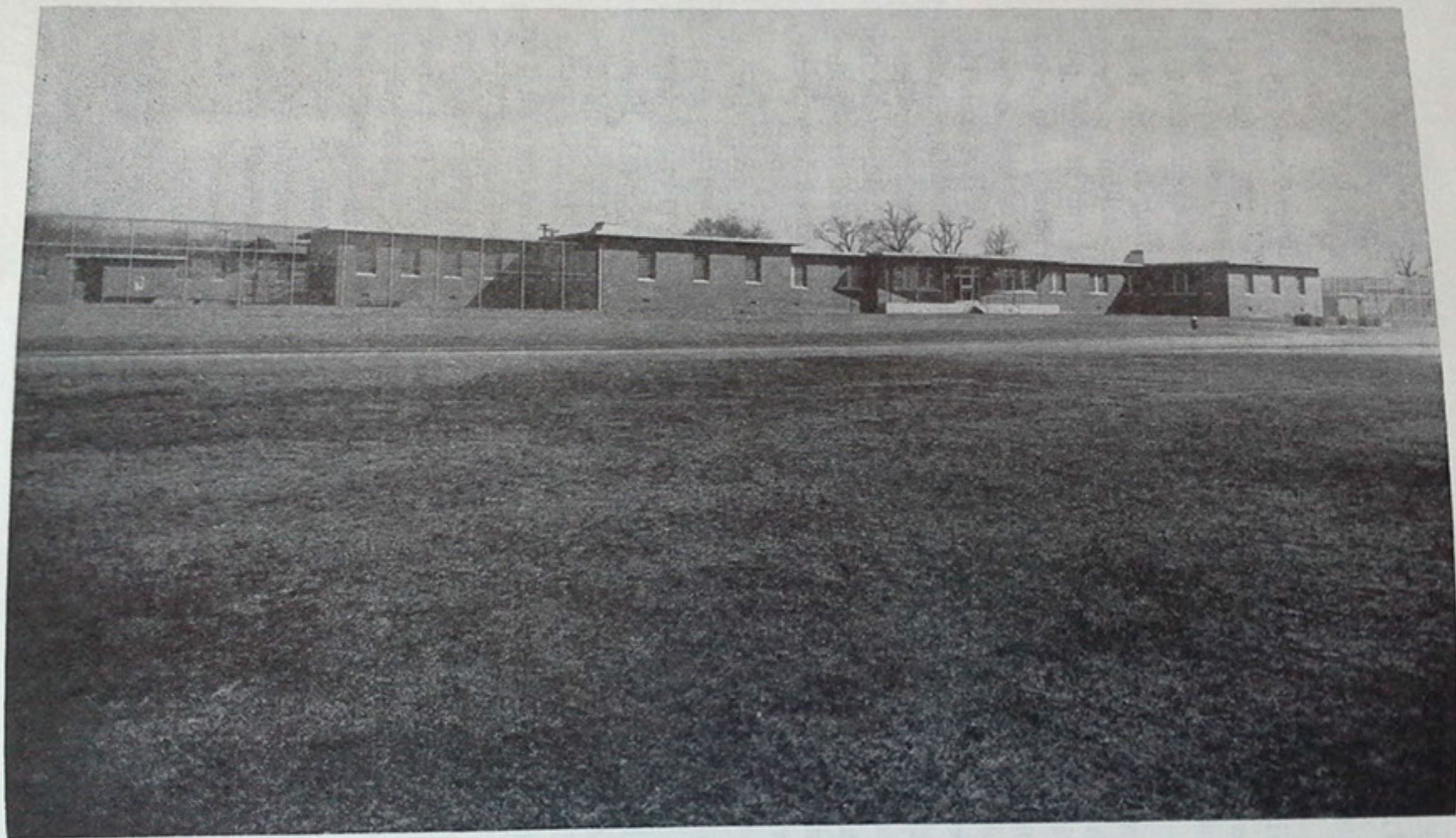
*To His Excellency, George Bell Timmerman, Jr.,  
Governor of South Carolina:*

The Mental Health Commission wishes to present herewith its Sixth Annual Report for the year July 1, 1957-June 30, 1958. It has met regularly during the year on the third Tuesday of each month for the purpose of carrying out the duties ascribed to it.

Although this report is for the fiscal year ending June 30, 1958, an effort will be made to bring up to date the building program that has been carried on at the State Hospital and at Pineland. Since 1952, the General Assembly has appropriated funds in the amount of nine and one-half million dollars to be used in permanent improvements and renovations at the State Hospital. The expenditure of these funds was directed toward increasing the bed capacity at the State Hospital to help overcome the overcrowded conditions there; to improve basic utilities; to provide areas for ancillary services such as occupational therapy and recreation; and to renovate some of the older buildings which were badly in need of repair.

To relieve the overcrowded condition at the hospital, four ward buildings for disturbed patients were built at the Columbia Division, and two similar buildings at the State Park Division, which added 912 approved and acceptable beds at the hospital. Picture No. 1 illustrates one of these six ward buildings. The completion of the Intensive Treatment (Medical Surgical) Building at the Columbia Division added an additional 208 beds making a total of 1120 approved and acceptable beds added to the hospital. Since the Taylor Building had been condemned and had to be razed, 273 persons occupying this building had to be removed to the new ward buildings. There was a net gain, therefore, of 847 beds to help relieve the overcrowded condition which, at the beginning of this construction, amounted to about 1800. It will be noticed, therefore, that the new bed space provided did not take care of quite half of the overcrowded condition. Since the yearly average population of the State Hospital continues to increase, the hospital is approaching its previous overcrowded condition.

Because of this new construction, it was necessary to increase the capacity of some of our basic utilities especially our steam plant. Picture No. 2 illustrates this project.



NO. 1—NEW WARD BUILDINGS FOR DISTURBED PATIENTS  
(4 at Columbia Division — 2 at State Park Division)